



Esempio cassetta Modular 2: Corpo (C2) + Sportello (SP2F)  
Example of Modular 2 mailbox: Body (C2) + Door (SP2F)



Modular C2 CGH  
con cornice di plastica ghisa - with cast-iron grey plastic frame



Modular C2 CAR  
con cornice di plastica argento - with silver plastic frame



Modular C2 CBI  
con cornice di plastica bianca - with white plastic frame

(confezione da 6 pezzi)

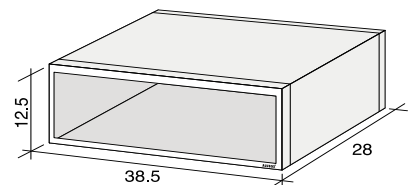
### CORPO MODULAR C2 PRELIEVO POSTERIORE

- C2** • Corpo per cassetta componibile in alluminio  
**C2F** • Corpo per cassetta componibile in lamiera elettrozincata

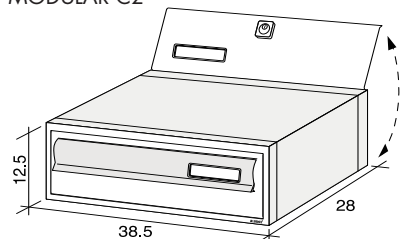
(6-pieces package)

### MODULAR C2 BODY REAR ACCESS

- C2** • Body for modular mailbox - aluminium  
**C2F** • Body for modular mailbox electrogalvanized sheet steel



MODULAR C2



MODULAR 2 completa - MODULAR 2 complete box

## PRELIEVO POSTERIORE

(confezione 6 pezzi)

### SPORTELLO Modular SP2F

Sportello frontale per Modular 2, completo di elemento mobile, in profilato d'alluminio:

- anodizzato argento
- anodizzato bronzo
- verniciato rosso RAL 3003 con elemento mobile ghisa
- verniciato verde RAL 6005 con elemento mobile ghisa
- verniciato bianco RAL 9016
- verniciato ghisa
- verniciato ghisa con elemento mobile in ottone
- con Kit Pubblicità

### SPORTELLO Modular SP2R

- Sportello Modular SP2R retro, per Modular 2, finiture come per SP2F, completo di serratura

Tutta la Serie MODULAR viene fornita con corpo e sportelli smontati.



SP2FAR



SP2FBR



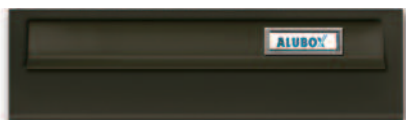
SP2FRO / el. mob. ghisa



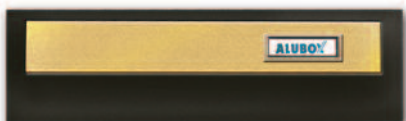
SP2FVE / el. mob. ghisa



SP2FBI



SP2FGH



SP2OTT con elemento mobile in ottone  
SP2OTT with polished brass flap



SP1PUB con kit pubblicità (vedi pag. 86)  
SP1PUB with publicity kit (see page 86)

## REAR ACCESS

(6-pieces package)

### MODULAR SP2F DOOR

Aluminium profile front door for Modular 2, complete with flap:

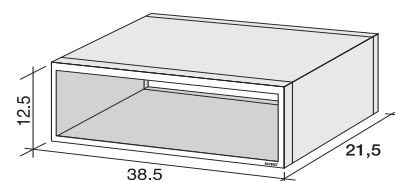
- anodized - silver
- anodized - bronze
- painted in RAL 3003 red, with cast-iron grey flap
- painted in RAL 6005 green, with cast-iron grey flap
- painted in RAL 9016 white
- painted in cast-iron grey
- painted in cast-iron grey with brass flap
- with publicity kit

### Modular SP2R DOOR

- Rear door Modular SP2R for Modular 2. Same finishes as SP2F, complete with lock

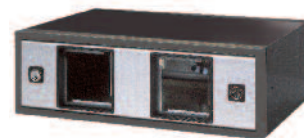
MODULAR series mailboxes are supplied in loose form ready for assembly.

### MODULAR 200/2



**C2002** • Corpo per cassetta componibile in alluminio con profondità 21,5 cm.  
**SOLO DA INCASSO CON CORNICE**  
**NON CONFORME ALLE NORMATIVE EN 13724**

**C2002** • Body for modular mailbox aluminium with 21.5 cms depth.  
**ONLY FOR RECESS MOUNTING WITH EXTERNAL FRAME.**  
**NOT IN ACCORDANCE WITH EUROPEAN STANDARD RULES EN 13724**



### MODULAR 2 ACC

Cassetta completa bifrontale da incasso passante, in alluminio elettro colore testa di moro e sportello porta accessori predisposto per l'inserimento di campanelli, telecamera, citofono e numero civico per i modelli Bticino Sfera. Accessori vedi da pag. 42.

### MODULAR 2 ACC

Complete through mounting double-sided mailbox, in dark brown oxi-anodized aluminium and accessories panel designed for incorporating doorbells, video camera, intercom and residence number for models Bticino Sfera. Accessories, see from page 42.



AM1 - Kit antivandalo con chiusura in tre punti per modello SP2R.  
AM1 - Anti-vandal kit with three-point lock for SP2R door.



(confezione da 1 pezzo)

**CORPO DOPPIO**  
con sportello pubblicità con 2 sportelli, fronte e retro.

(1-pieces package)

**DOUBLE HEIGHT BOX**  
with publicity door, rear and front door.